



**Bandit**  
EMPLOYEE-OWNED

***JUST***  
**HAMMER IT**



# UNMATCHED SERVICE AND SUPPORT:

When purchasing an HM6420, be assured that you will receive unmatched support. We strive to reduce your downtime with a dedicated dealer network featuring highly trained parts and service personnel. Each dealer invests significant resources to support Bandit end users at the highest level. To locate your authorized Bandit dealer, utilize the QR code.



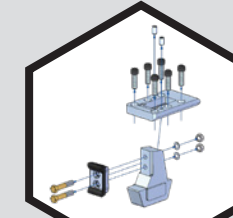
# SERVING A VARIETY OF APPLICATIONS!

Serving multiple applications, the HM6420 excels at processing a variety of material including but not limited to: biomass, chunk wood, compost, disaster clean-up, municipal solid waste, mulch, orchard recycling, pallets, stumps, whole trees, and more!

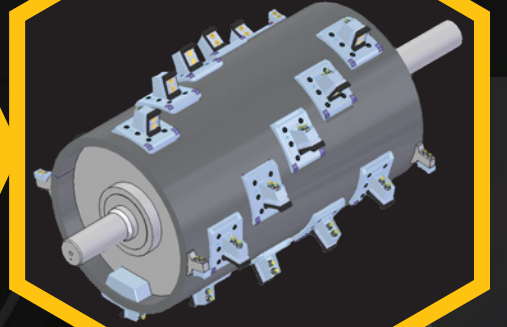


## HEAVY-DUTY HAMMERMILL

- 50" diameter x 66" wide
- 1.75" drum skin custom formed from rolled plate
- 20 carbide infused hammer inserts
- Patented quick change pocket system

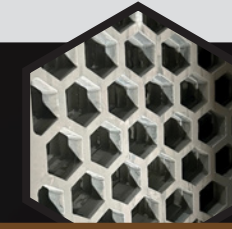


HM Mill Hardware

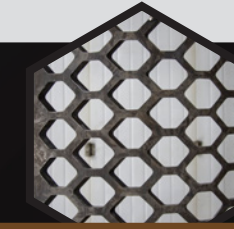


## EFFICIENT SCREENING SYSTEM

- Massive 4,650 square inches of screening area
- Hex, modified diamond, or round screens available ranging from 1" to 10" - machine utilizes three total screens
- Screen cradle option - allows for quicker changing of screen in sets



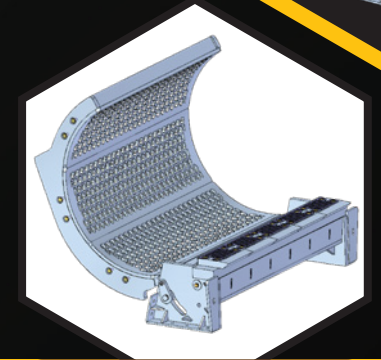
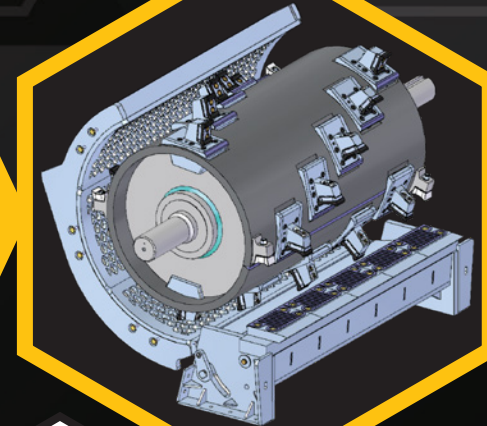
Hex Screen



Diamond Screen



Round Screen

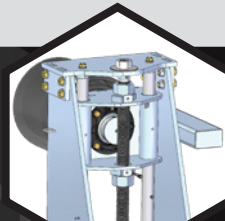


Screen Cradle



## INFEED / DRIVE SYSTEM

- Features an impressive max feed rate of 132 FPM!
- Direct driven infeed slat-style infeed conveyor providing over 18,000 pounds of pulling power
- Large diameter direct drive feedwheel with down pressure capabilities
- Simplified belt tensioner system – utilize top nut to raise or lower the idler sheave for desired belt tension



Belt Tensioner System



## CONTROLS

- Bandit control panel allows for quick and easy machine programming
- Displays key machine and engine parameter settings
- Proportional feed with 6 pre-set speeds – increases efficiency and end product consistency
- Wireless radio remote with LCD display screen



Wireless Radio Remote



## DISCHARGE

- Primary and secondary discharge with a maximum stacking height of 16' 8"
- Standard magnetic head pulley



## UNDERCARRIAGE

- Caterpillar Model 325EL steel track undercarriage – Features 4-year track warranty for assembled components



## MILL PROTECTION

- Impact detection system - designed to limit damage if a contaminant is struck inside the grinding chamber





# HM6420 TESTIMONIALS

JD Raymond Transport



Beeghly Tree



Green Mountain Mulch



Model HM6420	
Machine Capacity	
Grinding Capacity:	40"
Mill Opening:	40" high x 64" wide
Dimensions	
Length:	44' 4"
Width:	11' 3"
Height:	12'
Weight:	102,000 pounds (approximate)
Engine	
Engine:	Caterpillar C32, 1,200 horsepower
Fan:	Reversing
Clutch:	PT Tech HPT015R
Mill	
Dimensions:	50" diameter x 66" wide
Holders:	20
Tips:	(20) carbide impregnated inserts
RPM:	840
Screening Area:	4,650 sq / in.
Infeed Conveyor	
Dimensions:	16' long x 64" wide
Loading Height:	Tapered 86.75" to 100"
Hopper Volume:	Approx: 6 cubic yards
Feed Wheel:	37.75" diameter x 64.75" wide
Screen	
Screens:	(3) replaceable concave screens
Sizes:	1" - 10"
Shapes	Hex / Modified Diamond / Round
Gate	
Gate:	(1) replaceable, hydraulic operated gate
Discharge	
Dimensions:	15' long primary / 26' 5" long secondary (56" wide)
Magnetic Head Pulley:	Standard
Stacking Height:	16' 8"
Fuel Tank	
Size:	500 gallons
Hydraulic Tank	
Size:	120 gallons



# MISSION

As a team of employee-owners, we will provide quality, reliable, and productive equipment leading to high customer satisfaction and prosperity.

# VISION

Through continued product innovation with a commitment to provide unmatched support through a global dealer network, we will be the preferred equipment solution for those specializing in tree care and waste reduction applications around the world.

# CORE VALUES

## INTEGRITY:

We will hold ourselves to the highest integrity and ethical behavior following through on our promises and strengthening our reputation through trust.

## OWNERSHIP:

Each employee-owner will take initiative to bring positive results, striving to do better and anticipating problems before they occur.

## QUALITY:

Quality is an attitude with an unwavering commitment to manufacture and support each product to the highest quality standards, ensuring each machine will exceed customer expectations.

## TEAMWORK:

We will work as a team to achieve common objectives. With consistent collaboration, we will achieve the highest level of results. Through mutual respect, we will welcome diverse skills and perspectives to enhance our ability to be an industry leader and innovator.

WATCH  
IT RUN!



6750 MILLBROOK ROAD • REMUS, MICHIGAN 49340

WWW.BANDITCHIPPERS.COM • SALES@BANDITCHIPPERS.COM

P: 1-800-952-0178 • F: 1-989-561-2273



WWW.YOUTUBE.COM/BANDITCHIPPERS • WWW.TWITTER.COM/BANDITCHIPPERS • WWW.FACEBOOK.COM/BANDITINDUSTRIES

All specifications, dimensions, standards and options are subject to change without notice. Dimensions and weights may vary, depending on options and engines selected. Bandit Industries, Inc. reserves the right to change designs, specifications and options without prior notice.

All figures shown in technical data were current at the time of printing. However, these can change as a result of further product development and regional distribution differences. Please contact your authorized Bandit dealer or Bandit Industries, Inc. for more information.

Made in the USA. Printed in the USA. © 2025 Bandit Industries, Inc. All Rights Reserved.